

## Project Description

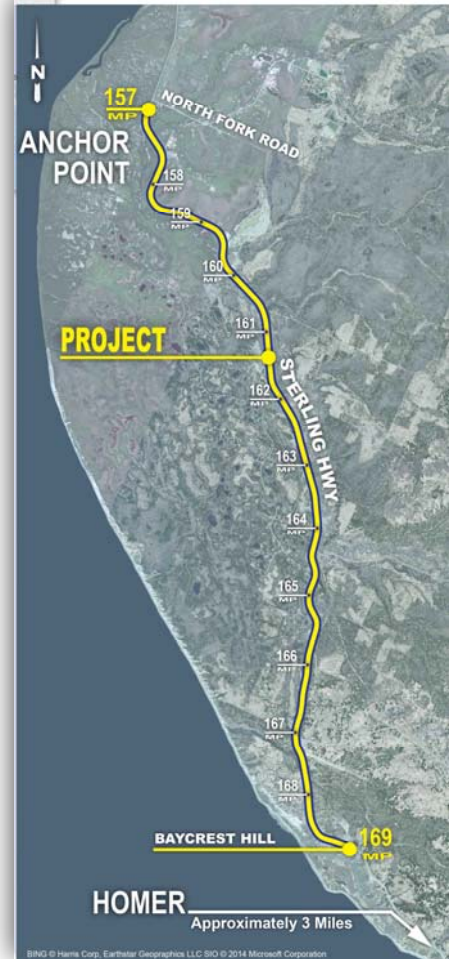
The Alaska Department of Transportation and Public Facilities (DOT&PF) is proposing improvements to Sterling Highway Milepost 157-169: Anchor Point to Baycrest Hill to restore the structural integrity, improve safety, reduce congestion, and improve travel efficiency of the project corridor. Preliminary engineering and environmental assessment services began in 2014. Design is underway with construction scheduled to start in 2020.

## Project Status

- The Categorical Exclusion environmental document has been approved by the state and Federal Highway Administration (FHWA).
- The first phase of this project completed the scoping process: preliminary capacity, traffic and safety analysis, public involvement, surveying, environmental studies, and preliminary engineering.
- Geotechnical and design work began in late 2016. Design and right-of-way acquisition phases will be complete in early 2020.
- The corridor may be broken into multiple construction projects to accommodate available funding.

## Funding

This project is being completed using a combination of state and federal funds and is being developed in accordance with FHWA guidelines.



## Project Timeline

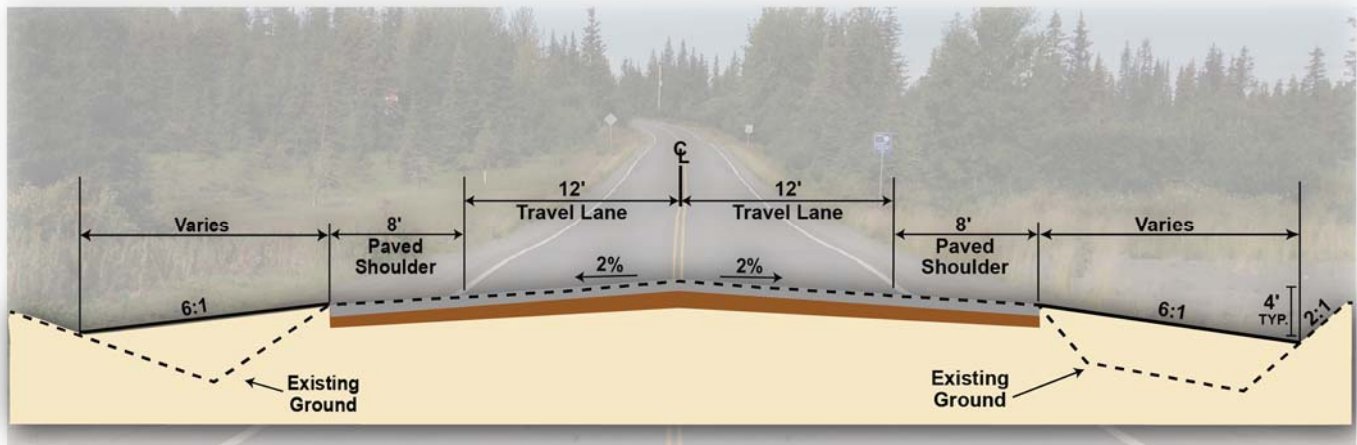
Environmental Assessment and Preliminary Engineering	2014 – 2016
Design and Permitting	2016 – 2019
Right-of-Way Acquisition	2018 – 2020
Construction	2020 – 2021

## For more information contact:

**Tom Schmid, P.E.**  
DOT&PF Project Manager  
(907) 269-0543

**Jovie Garcia**  
DOWL Project Administrator  
(907) 562-2000

## Proposed Typical Cross-Section



## Proposed Improvements

The proposed improvements will include new pavement, earthwork, signing, and drainage structures to extend the life of the existing facility.

Specifically, the project will:

- Rehabilitate the roadway (e.g. new pavement and earthwork)
- New bridges at North Fork Anchor River and Anchor River
- Curve realignment
- New passing and climbing lanes
- Intersection improvements (e.g. turning lanes and changes to improve sight distance)
- Shoulder widening to eight (8) feet
- New erosion control measures
- Increased clearing
- Drainage facilities including, new culverts and upgrades for fish passage
- Resolve maintenance issues (e.g. guardrail, signage, striping, pavement, etc.)

### We Welcome Your Input!

Public comments will be gathered throughout the project. Please let us know your comments and concerns.

Email your thoughts and ideas to the project team at [sterlinghwyp157-169@dowl.com](mailto:sterlinghwyp157-169@dowl.com).

The team will periodically update the website with meeting materials, reports and other project documents. We will add your email and/or mailing address to the project mailing list, and let you know the dates and locations of public meetings for the project.

[sterlinghwyp157-169@dowl.com](mailto:sterlinghwyp157-169@dowl.com).

Watch for updates on the web at: [www.sterlinghwyp157-169.com](http://www.sterlinghwyp157-169.com)

Last updated: January 31, 2018